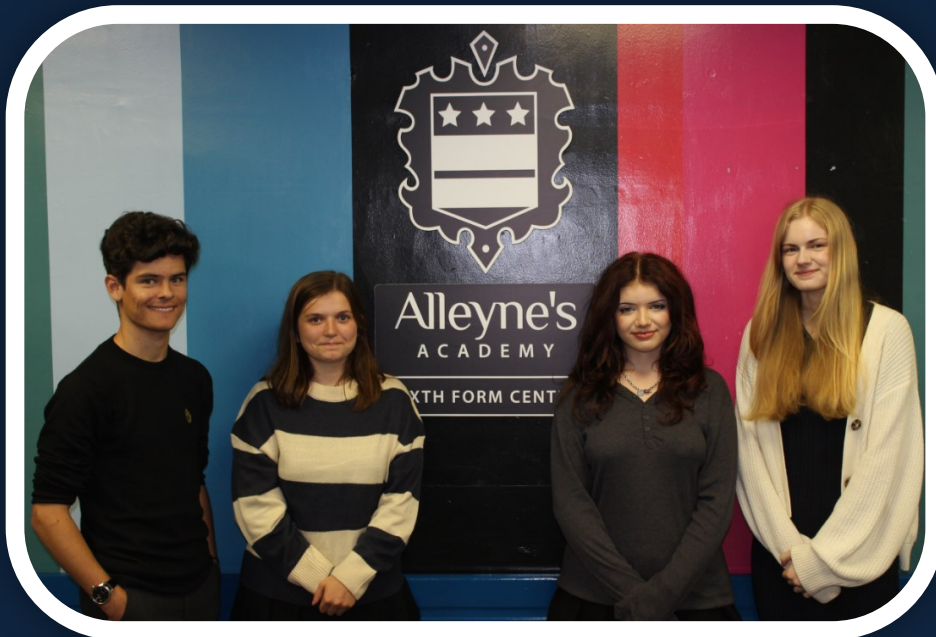




SIXTH FORM PROSPECTUS

For September 2024

A tradition of caring for success





Welcome to Alleyne's Academy:

Sixth Form Prospectus



Ms K Lockett, Headteacher
BA Hons, MEd, NPQH

As the Headteacher of Alleyne's Academy, I feel privileged that our school has such a fantastic Sixth Form. We are extremely proud of the achievements of our senior students. We pride ourselves in offering a wide range of courses to meet students' needs, led by experienced subject specialists.

Alleyne's Sixth Form provides a friendly but academically challenging learning community. We set high standards and expect our students to work hard in order to fulfil their potential. Sixth Form students are integral to the smooth running of the school and act as ambassadors for and leaders of our younger students.

Alleyne's Sixth Form programmes of study ensure that students follow courses where there is clear progression to their next steps in education, training or employment. We enable all students to have the opportunity to develop vital employability skills such as leadership, teamwork and self-discipline. We also ensure that students are well prepared to make a positive contribution to society by broadening their experience through university visits, residentials, cultural experience and colleagues from the world of business, enterprise and education coming in to the school and inspiring our students.

Enrichment activities play a large part in Sixth Form life such as sport, *Young Enterprise*, *Duke of Edinburgh Award*, *Gold Crest Engineering Scheme*, *Buddy Scheme*, charity work, work experience and a wide variety of leadership roles within the school.

The Head of Sixth Form and his dedicated assistant and tutors form a specialist team to guide students throughout their time in the Sixth Form preparing them for their next steps whether that is employment with training or University.

I hope you find our prospectus informative and look forward to seeing you at some point this academic year and welcoming you to our school. If you have any queries please do not hesitate to contact us.



Part 1

An Introduction to the Sixth Form

Part 1: An Introduction to the Sixth Form

Programmes of Study/Entry Criteria	5
Admissions Panel	5
Sixth Form Courses	6
Enrichment Programme	7
Personal Development Opportunities	7
Work Experience	7
Independent Study	8
Young Enterprise and Gold Crest Engineering Scheme	8
House System	8
Careers Education, Information & Guidance	9
Monitoring and Assessment	10
Pastoral Support	10
Sixth Form Learning Facilities	10
Sixth Form Access Arrangements	11
Sixth Form Leisure Facilities	11
Dress Code	11
Onwards & Upwards	12

INTRODUCTION



Alleyne's
ACADEMY
NISI DOMINUS FRUSTRA - 1558

Programmes of Study/Entry Criteria

Programme 1	Programme 2	Scholars' Programme
<i>Three Applied Generals</i>	<i>Three A Levels</i> <i>or</i> <i>A Levels and Applied Generals</i>	<i>Four A Levels</i> <i>or</i> <i>A Levels and Applied Generals</i>
<ul style="list-style-type: none"> • Five different subjects* at Grades 9-4/D*-P, including • English & Maths 9-4 essential • Grade 4/P essential in subjects chosen 	<ul style="list-style-type: none"> • Five different subjects* at Grades 9-4/D*-P, including • English & Maths 9-4 essential • Preferably Grade 5/M in subjects chosen 	<ul style="list-style-type: none"> • Average of at least Grade 7 across all subjects* • English & Maths 9-7 essential

* Combined science grades count as two separate subjects

Higher entry requirements for Biology, Chemistry, Physics and Mathematics.
These are given on the relevant subject pages.

Admissions Panel

Where applicants offer alternative qualifications or more than one qualification in the same subject for entry, they may be referred to the Admissions Panel. The Panel reserves the right not to offer a place on a course to students who, it believes, would not benefit from it.

If the Admissions Panel decide to admit a student to Sixth Form who does not have both English and Maths at grade 9-4, a requirement of admission will be that the student will have to attend the appropriate re-sit English and/or re-sit Maths sessions.

Sixth Form Courses



Attendance in the Sixth Form is full time with each student's programme of study comprising timetabled lessons, supervised silent study, independent study sessions and enrichment activities.

Level 3 Applied General Courses

Applied General courses are equivalent to A Levels but have a more vocational focus. We offer the Extended Certificate (equivalent to one A level) and Diploma (equivalent to two A levels).

External assessment can take a variety of forms and is approximately 65% of the final marks.

Internal assessment, making up the remaining marks, is carried out during the course in the form of assignments.

A Level Courses

Students sit examinations for full A Level qualifications in the summer period at the end of Year 13.

For students on the Scholars' Programme, it may be possible to take an AS examination at the end of Year 12.

Applied General Courses:

Business Extended Certificate (one A Level equivalent)
Business Diploma (two A Level equivalent)
Criminology Applied Diploma (one A Level equivalent)
Health and Social Care Extended Certificate (one A Level equivalent)
IT Extended Certificate (one A Level equivalent)
Psychology Extended Certificate (one A Level equivalent)
Science Extended Certificate (one A Level equivalent)
Sport Extended Certificate (one A Level equivalent)

Please note: courses may not run due to insufficient numbers or unforeseen circumstances.

Enrichment Programme

In Alleyne's Sixth Form we believe that becoming a well rounded individual and a good citizen are extremely important. The Alleyne's Enrichment Programme allows students to allocate their time to conduct a variety of activities that will help them do so and at the same time add value and depth to a CV or university application. Students must spend a minimum of one hour per week conducting and recording some form of enrichment activity chosen by the student. This activity could be anything that will aid their CV or an application and will help the student to develop new skills or experience new ideas. Examples of enrichment activities for students include: the SEND Buddy Scheme, Young Enterprise, supporting in lower school sports clubs, supporting in sports clubs outside of school and supporting other schools and nurseries in the Stone and Stafford area.

The Enrichment Programme is designed to help students develop academic, social and personal skills in line with their studies and to enable students to engage with areas of interest outside of their academic studies. Enrichment allows students to add breadth and depth to their learning experience whilst in the Sixth Form, whilst also making a contribution to society. Students also attend daily registration where they will follow a programme of activities based upon issues relevant to young people such as careers and further education, health and social issues.



Personal Development Opportunities

Sixth Form students are encouraged to develop and broaden their personal, social and communication skills through various opportunities available to them including:

- Election to the Head Prefect Team
- Nomination for School Prefect
- SEND Buddy Mentoring Programme
- Sixth Form Prom Committee
- Work-based learning
- Duke of Edinburgh Awards
- Gold Crest Awards
- Community service
- Classroom support
- Charity fundraising
- Debating society



Students are encouraged to take up the opportunity of involvement with work based learning, university open days, summer schools and taster days at various higher education institutions; we can also arrange for students to undergo 'mock' university entrance interviews if so desired. Members of staff are always available on A Level results day in August to ensure all students receive the correct guidance.



Duke of Edinburgh

We are extremely proud that in 2022 we have had 14 Sixth Form students that have successfully completed their Gold Award. Students had to demonstrate leadership and teamwork skills whilst completing a rigorous expedition around the Dark Peaks in Edale.

Work Experience

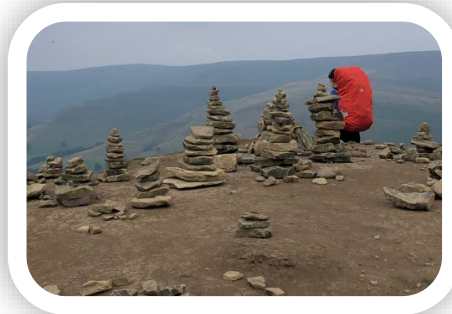
Given the high competition for jobs and apprenticeships in today's employment market, and the ever-increasing demands of university entry requirements, we believe it is crucial that students gain valuable and relevant work experience linked to their personal programme of study. We dedicate an entire week during Year 12 to this and support students, where possible, in obtaining a placement

Independent Study

After a formal review, involving feedback from students, teachers and parents we provide supervised study sessions to aid students' understanding of independent learning. Independent Study is crucial if students are to make good progress in all courses. With each round of monitoring students will receive a grade indicating the extent to which they are conducting independent work and, if any, what capacity they have to improve. Independent Study includes the following: completion of research homework; research classwork; details of resources used; evidence of wider reading or websites; questions asked as a result of wider reading; completion of additional work not set in lessons and attendance to non-compulsory support sessions (eg revision clubs).

House System

The House system continues in the Sixth Form. Students may need to move House as groups are made up of a mixture of students so the tutor group may be in a different House. Most of the activities available to lower school are available to the Sixth Form, but in addition we run the Sixth Form Bake Off. We also encourage members of the Sixth Form to be House captains to help to organise the efforts of not just the Sixth Form but also lower school.



Young Enterprise, Duke of Edinburgh and Gold Crest Engineering Scheme





Careers Education, Information and Guidance

Whilst undertaking studies at Alleyne's Sixth Form students will be assured of expert help, support and guidance in choosing either a career or choice of higher education institute. The Sixth Form works closely with the Careers and Participation Service, local universities and colleges and UCAS to ensure that all our students get the right advice needed to make informed decisions about their post Sixth Form choices. A dedicated, experienced and independent Careers Advisor works with the Sixth Form to offer support and guidance regarding a **full range of progression routes**. All students will receive advice and support from a personal tutor as well as teaching staff.

Alleyne's Academy Sixth Form has developed a comprehensive induction programme for students applying through UCAS to university.

We work closely with contacts at local universities to empower students with the information they need to make a considered decision as to where to go once they have completed their studies at Alleyne's. We have strong links with University College Oxford and offer

comprehensive support to students who wish to make an application to Oxford or Cambridge University. This support includes mock interviews, talks with admissions tutors, advice on writing personal statements and support in preparing for entrance tests.

For those considering apprenticeships and/or seeking employment, we are delighted to have developed partnerships with local businesses ABB and Capula. ABB have committed to supporting our school in raising the awareness to students across the school of apprenticeships and their understanding of employability.





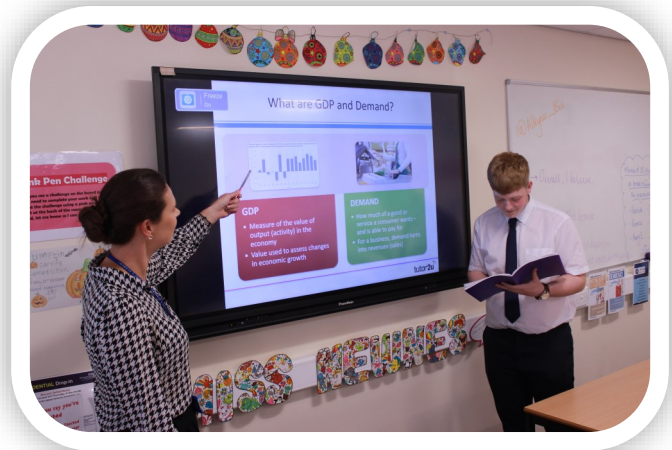
Monitoring and Assessment

At the start of the academic year students will be set challenging target grades for all subjects, based upon their overall performance at GCSE. Throughout Year 12 and Year 13, students and parents will receive, on a half-termly basis, a summary of their progress for each subject with an indication of their current 'attitude towards learning' (ATL grade) and standard of 'independent learning' (IL grade). In order to complete this, assessments will be set regularly by staff throughout the year and will include homework, topic tests, mock examinations etc.

There will be formal mock examination periods during the academic year. If students fail to pass this mock or fail to demonstrate satisfactory progress then their future at Alleyne's Academy Sixth Form may be reviewed. All situations are assessed on an individual basis, involving the feedback and support from staff and parents/carers.

The academic monitoring of the progress of students will provide support as necessary. However, those students failing to achieve a Grade E or a Pass grade, or not demonstrating satisfactory progress in relation to their target grades may not be permitted to continue to Year 13.

Students sit examinations for full A level qualifications in the summer period at the end of Year 13.



Pastoral Support

All students at Alleyne's Sixth Form have access to a form tutor who is available to provide pastoral support to students. The form tutor is the first port of call for students to discuss issues which are of concern to them regarding their time in the Sixth Form. Sixth Form tutors are all experienced and knowledgeable staff who can provide help, support and assistance to students as they navigate their way through their academic, social and pastoral journey through the Sixth Form. The Heads of Sixth Form are available if students wish to discuss their concerns; they will also liaise regularly with form tutors to discuss students' progress through the Sixth Form.

Sixth Form Learning Facilities

All classrooms, laboratories, art and drama studios at Alleyne's are equipped with interactive whiteboards to create an exciting and invigorating learning environment for students.

Students in the Sixth Form have their own common room and large study area in which to focus on private study. The study room is equipped with computers and all University and careers guidance resources are available in the shared stored area. In addition there are some smaller rooms in the Sixth Form Centre which can also be used for private study.

During lunchtimes and after school Sixth Form students often make use of the drama and art studios as well as the music practice rooms to further develop their skills and interests in these areas. The many ICT suites within the school are also available for students to use for private study when not timetabled for teaching.



Alleyne's
ACADEMY
NISI DOMINUS FRUSTRA - 1558

Sixth Form Access Arrangements

The school is committed to meeting its statutory responsibilities. Relevant policies are approved by the Governing Body of the school. Students with special educational needs and/or disabilities are supported by the Special Educational Needs and Disability Co-ordinator (SENDCo), Mr C Bailey. The school has a current Disability Equality Scheme and this is monitored by the Senior Leadership Team of the school. A key aim of the school is to provide equal opportunities for all students to ensure that no individual student is treated less favourably than any other. The school fully complies with the Disability Discrimination Act.

Dress Code

Sixth Form students are seen as role models for students in the lower school and, therefore, are expected to dress accordingly. There is an expectation that our Sixth Form students wear smart business attire in line with the dress code set for staff members.

The full Sixth Form Dress Code for September 2024 will be available later in the academic year on the school website.

Sixth Form Leisure Facilities

In study periods and at lunch and break, students are welcome to use the common room. The area is used by students to meet friends, socialise and generally take a break from their studies. It is attractively and comfortably furnished and includes a kitchen area, work area, lockers and notice boards where students can communicate information about Sixth Form events. In addition, we have a large study area and a large silent study area, complete with computer facilities. Sixth Form students also have access to the Sixth Form Café where they can purchase hot and cold food and drinks every day until the end of lunch time.

Students also make use of Alleyne's Sports Centre with its large sports hall and gymnasium. Sixth Form football training takes place on a Monday night on the astro-turf football pitch; students can enjoy badminton on a Friday after school. Students may also represent the school in rugby, football and cross country, for example.



Onwards and Upwards

Alleyne's Academy Alumni

At Alleyne's Academy Jacob achieved an A in three subjects; Sociology, Business and Geography. He is now studying Politics and International Relations at the University of Warwick*

After achieving a fantastic A in Biology, Chemistry and an A in Geography, Alasdair is studying Chemistry at the University of Sheffield.*

Matthew achieved an amazing 3 A in Business, Maths and Physics. He has chosen to study Computer Science at Staffordshire University.*



The
University
Of
Sheffield.





Fadia worked very hard to secure an A in Biology, Chemistry, and Maths. She has decided to study Medicine at Queen Mary University of London.

Liv achieved a Distinction in both IT and Business. She has decided to stay local and study Primary Education at Staffordshire University.*

After securing 3 A grades at A Level, Catherine decided against studying at Loughborough University and started an Apprenticeship at a local Accountancy firm.



Pheobe also worked extremely hard in securing a Distinction in both IT and Business. She also secured a grade B in Sociology. Pheobe is now studying Marketing and Management at Newcastle University.*



Queen Mary
University of London



Alleyne's
ACADEMY
NISI DOMINUS FRUSTRA - 1558

Part 2

Sixth Form Courses

Business A Level	15
Business Applied General	16
Information Technology Applied General	17
Computer Science A Level	18
Art & Design A Level	19
Drama & Theatre Studies A Level	20&21
Sport Applied General	22
English Language A Level	23
English Literature A Level	24
French A Level	25
Geography A Level	26&27
History A Level	28
Psychology A Level	29
Psychology Applied General	30
Religious Studies A Level	31
Sociology A Level	32
Health and Social Care Applied General	33
Criminology Applied General	34
Science Applied General	35
Biology A Level	36
Chemistry A Level	37
Physics A Level	38
Mathematics A Level (Further Maths)	39
Contacts	40
Supporting you through the Application Process	41



Business

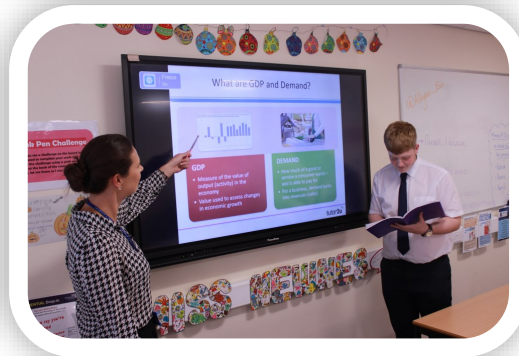
Qualification: A Level

Why choose Business?

- It supports other subjects, particularly General Studies, but also ICT, Geography and Maths
- It is relevant for those wishing to go into higher education or employment
- It considers the interrelated nature of business activities and how they affect competitiveness and the markets in which businesses operate
- It identifies the influences on functional decisions and plans including ethical and environmental issues
- It examines how technology is changing the way decisions are made and how businesses operate and compete
- It assesses the impact on stakeholders of functional decisions and their response to such decisions

Subject Content:

- The Role of Managers
- Business Ownership
- Marketing
- External Influences
- Stakeholders
- Operational Objectives
- Marketing Mix
- Capacity utilisation
- Financial Forecasting
- The Economic Environment
- Sources of Finance
- Theories of Motivation



Business

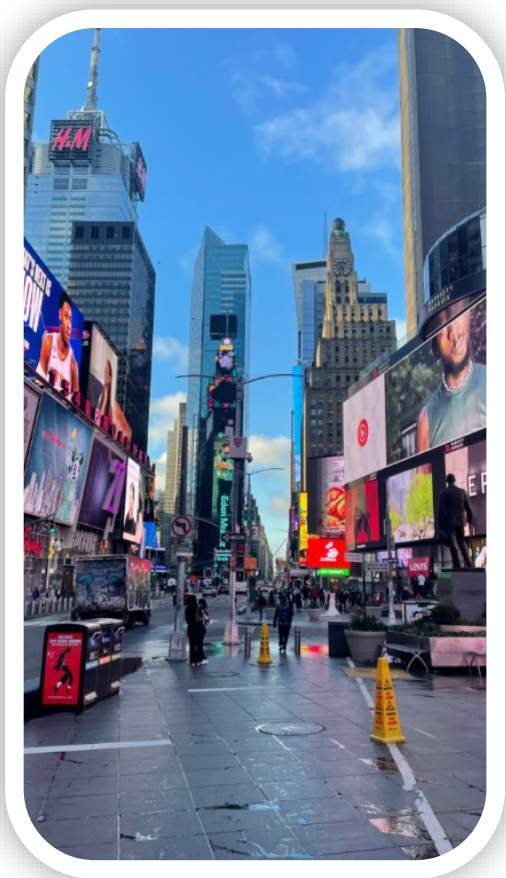
Qualification: Applied General

Why choose Applied General Business?

- It will enable you to progress to a wide range of higher education courses
- A great emphasis is placed on independent study
- Applied learning that brings together knowledge and understanding with practical and technical skills
- You will develop transferrable skills such as communication, teamwork and research and analysis

Subject Content:

- Exploring Business
- Developing a Marketing Campaign
- Personal and Business Finance



Information Technology

Qualification: Applied General

Why choose IT?

- IT is the study of skills and concepts that are relevant to the business world
- IT allows opportunities for practical work carried out using a range of software and hardware
- IT will complement any other course you may choose to take
- IT is for students interested in creating IT systems to manage and share information
- IT will equip you with skills that can be easily transferred to the workplace and other courses
- Careers include teaching, business and marketing, systems development, system design

Subject Content:

- Information Technology Systems
- Creating Systems to Manage Information
- Using Social Media in Business
- Data Modelling



Computer Science

Qualification: A Level

Why choose Computer Science?

- Computer Science is the study of the theoretical and practical engineering of computational devices.
- Computer Science provides a deep understanding of both hardware and software including maintenance and development.
- It provides an understanding of how data is sent, received and analysed and the growing importance of network security.
- Computer Science complements a wide range of other subject choices and lends itself to many different degrees. Including Sciences and Engineering, apprenticeships and careers.
- There is a current shortage of qualified Computer Scientists-potential career paths include Software Developer, Network Administrator, Systems Analyst, Teaching, Database Administrator & many more.

Subject Content:

- The Characteristics of Computer Hardware and Software
- The Importance of Networking and Exchanging Data
- Problem Solving and Computational Thinking
- Web Technologies (HTML, CSS and JavaScript)
- Planning, Designing and Creating Algorithms
- Advanced Programming Techniques



- To develop formal and practical artistic skills in a range of media
- To develop conceptual skills alongside the 'creative process'
- To combine traditional and contemporary aspects of art and the wider world
- To learn about and research subjects (themes) that can include; popular culture, society, history, environment, religion, current affairs and politics
- To prepare you for future careers in the vast world of Art and Design

- Development of a portfolio of work and moderator's exhibition
- Research other artists, art movements and cultures
- Explore and develop formal art skills in a range of media
- Develop, explore and experiment, creatively, with the use of a range of media and materials
- Develop ideas based on a theme taken from the world around us



Drama & Theatre Studies

Qualification: A Level

Why choose Drama and Theatre Studies?

- The subject develops vital skills which are essential and looked on favourably by a range of career pathways from the theatre itself to journalism, management, human resources and teaching
- You will work as an actor, director and designer
- You will learn about historical, cultural and political movements which influenced and shaped theatre
- You will have the opportunity to work both independently and as part of a group
- You will have the opportunity to perform to live audiences

Subject Content:

- Drama & Theatre; study of two set plays from contrasting genres, periods and styles
- Analysis of a live theatre production
- Creating Original Drama; devising an authentic piece of drama showing influence from one prescribed practitioner
- Making Theatre; interpreting extracts of a script, performance of scripts and exploration of effects of a range of practitioners

You may opt to work as a designer (sound, set, costume, lighting, make-up) as opposed to performer





Alleyne's
ACADEMY
NISI DOMINUS FRUSTRA - 1558

Sport

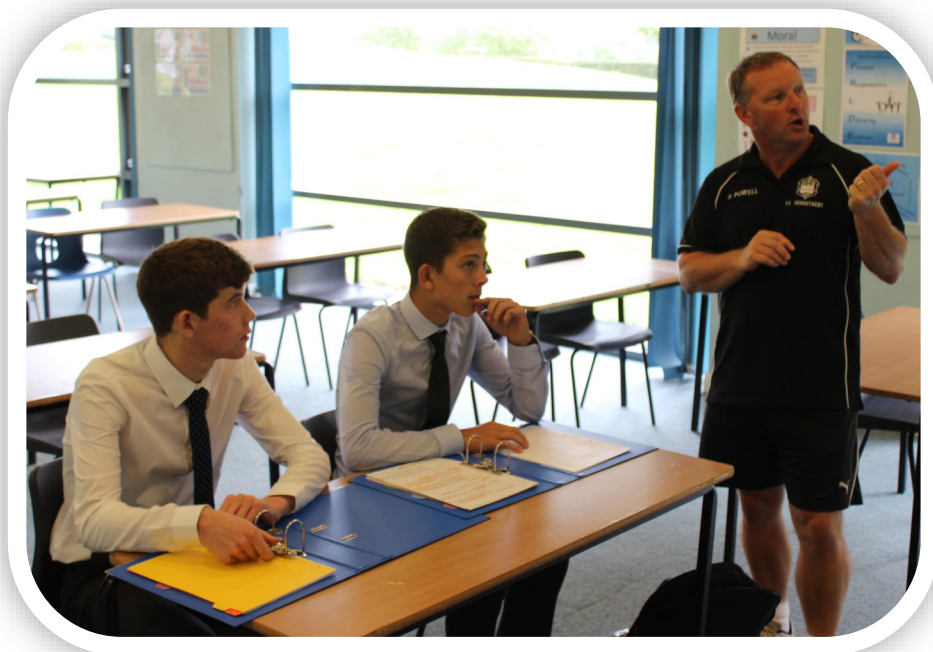
Qualification: Applied General

Why choose Sport?

- If you are considering entering the workplace in the field of sport, leisure or recreation.
- If you would like to understand more about your own place in the sport sector.
- To enable you to develop a range of techniques, personal skills and attributes essential for successful performers in working life.
- To gain a qualification that allows you to enter employment in the sport and active leisure sector or to progress to a related higher education course.
- To enable entry to an apprenticeship.

Subject Content:

- Anatomy and Physiology
- Fitness Training and Programming for Health, Sport and Well-being
- Professional development in the Sports Industry
- Sports Leadership
- Application of Fitness Testing
- Sport Psychology
- Practical Sports Performance



Why choose English Language?

- English Language will give you the opportunity to put your investigation skills to the test and find something different about the language we use every day.
- The skills you develop will support you across all subjects in essay writing, communication and analysis.
- If you are scientific, this subject will appeal to you as we decode the systems of our language.
- If you are creative, you will get the opportunity to apply your skills in different contexts and manipulate your style for different purposes.
- The career paths open to you after studying English Language are endless, your language and communication skills will look appealing to all employers

Subject Content:

- Linguistic analysis of speech
- and writing (phonology, lexis, semantics, pragmatics, discourse structure and grammar)
- Language and Power
- Language and Gender
- Language and Technology
- Child Language Acquisition
- Language Change
- Academic writing
- Language investigation



English Literature

Qualification: A Level

Why choose English Literature?

- To develop interest in and enjoyment of literature and literary studies
- To engage critically and creatively with a substantial body of texts and ways of responding to them
- To develop and effectively apply knowledge of literary analysis and evaluation in writing
- To explore the contexts of the texts and others' interpretations of them.
- The skills you will develop will be useful in a wide range of careers.

You will develop skills in:

Planning and researching written work;

Articulating knowledge and understanding of texts, concepts and theories;

Leading and participating in discussions;

Negotiation and working in a team to present ideas and information;

Effectively conveying arguments and opinions and thinking creatively;

Using your judgement to weigh up alternative perspectives;

Critical reasoning and analysis;

Independent working;

Time management and organisation

Subject Content:

- Shakespeare
- Dystopian novel
- Poetry
- Modern drama
- Comparative coursework essay



French

Qualification: A Level

Why choose French?

- The subject will give you the ability, confidence and satisfaction to communicate in another language
- You will develop linguistic skills alongside the understanding of the culture and society of countries where French is spoken
- Learners on the course will benefit from exploring the technological and social changes, looking at diversity and the benefits it brings
- Studying a foreign language will give you access to a range of exciting and rewarding careers:
 - Law/ Politics
 - Finance
 - Sales and Marketing / IT
 - Teaching
 - Transport, Logistics, Tourism and Leisure
 - International Organisations (UN, EU Institutions)
 - Translation/Interpretation

Subject Content:

- Social issues and trends
- Political and artistic culture
- Grammar
- French Famous Works: literary texts and films





Geography

Qualification: A Level

Why choose Geography?

- The subject is perfect for anybody who has a genuine curiosity about the world's places, people and environments and who like to ask questions and search for answers
- It allows you to explore local, regional and global issues
- It develops your ability to think independently
- It allows you to discover human, physical and environmental geographical relationships
- You will improve key abilities such as problem solving and decision making
- You will develop your communication, organisation and analytical skills
- Further Education: geographers can go on to study higher level courses, including foundation degrees and undergraduate degrees
- Employment: geographers can go into a wide range of jobs including:

Advertising	Education	Environmental management
Finance	Law	Marketing
Retail	Sales	Social/health services

Subject Content:

Physical geography

- Water and carbon cycles
- Hot desert environments and their margins
- Coastal systems and landscapes
- Hazards
- Ecosystems under stress
- Cold environments

Human geography

- Global systems and global governance
- Changing places
- Contemporary urban environments
- Population and the environment
- Resource security



Alleyne's
ACADEMY
NISI DOMINUS FRUSTRA - 1558

Why choose History?

- History helps students to understand the significance of historical events, the role of individuals in history and the nature of change over time
- It will support students in gaining a deeper understanding of the past through political, social, economic and cultural perspectives
- The topics are engaging and the nature of both the examined unit and the historical enquiry prepare students for courses at university level
- It prepares students for degrees in Law, Politics, Archaeology, Art History, History and English

Subject Content:

- Industrialisation and the People: Britain c 1783–1885
- The Sun King: Louis XIV, France and Europe 1643–1715
- Component 3: the non-examined assessment. This component is an historical investigation which gives the student an opportunity to research a topic and to produce an independent piece of extended writing



Psychology

Qualification: A Level

Why choose Psychology?

- The subject will give you an understanding of the way people think and why people behave in certain ways
- You will learn a variety of skills such as problem solving and analytical thinking
- You will learn to improve your communication
- Studying Psychology will give you access to a range of exciting careers:
Forensic psychology
Nursing
Teaching
Business and Marketing

Subject Content:

- Social influence
- Memory
- Attachment
- Approaches in Psychology
- Psychopathology
- Research methods
- Biopsychology
- Issues and debates in Psychology
- Schizophrenia
- Gender
- Forensic Psychology



Alleyne's
ACADEMY
NISI DOMINUS FRUSTRA - 1558

Psychology

Qualification: Applied General

Why choose Applied Psychology?

- Applied Psychology will consider the way that people think and why they behave in particular ways
- You will learn to use a variety of skills, such as problem solving and analytical thinking
- You will develop your methods and style of communication
- Studying Applied Psychology will give you access to a range of interesting careers:
Forensic psychology
Nursing
Teaching
Business and Marketing

Subject Content:

- Psychological Approaches and Applications
- Conducting Psychological Research
- Health Psychology
- Option from:-
- Criminal and Forensic Psychology
- Promoting Children's Psychological Development
- Introduction to Psychopathology
- Applied Sport Psychology



Religious Education

Qualification: A Level

Why choose Religious Education?

- You are encouraged to engage in topical issues and acquire knowledge and a critical understanding of major issues that are relevant to learners in the 21st century
- The Russell Group of top universities has made it clear that Religious Studies A level provides 'suitable preparation for University generally'
- We want to share our enthusiasm and are keen to enable students to acquire skills that will prepare them for higher education or the world of work

Subject Content:

Philosophy of Religion

- Arguments for and against the existence of God
- The nature and influence of religious experience
- Problems of Evil and Suffering
- Philosophical Language
- Views of Life after death

Ethics

- Utilitarianism
- Situation Ethics
- Natural Moral Law
- Ethical Language
- Deontology and Virtue Ethics
- Medical Ethics

Buddhism

- Key beliefs and teachings
- Sources of wisdom and authority
- Social and historical development
- Works of scholars and primary texts



Sociology

Qualification: A Level

Why choose Sociology?

- It is a rigorous academic subject that is also rooted in the real world
- It enables you to develop critical thinking skills, to analyse and interpret the world around you
- The subject will give you an understanding of the way people think and why people behave in certain ways
- You will consider questions such as:
- Why do some people join gangs?
- Why do people get married or divorced?
- Why do some people underachieve in school?
- Why do some pupils join anti-school subcultures?
- How do sociologists research society?

Subject Content:

- Education
- Families and Households
- Beliefs in Society
- Crime and Deviance
- Theory and Methods



Health and Social Care

Qualification: Applied General

Why choose Health and Social Care?

- Students who study health and social care at this level make a positive difference to people's lives, whilst learning valuable skills that are transferrable across many professions
- Opportunities for work both in the UK and abroad
- Can offer a gateway to NHS careers
- Vocational qualifications are well respected within the Health and Social Care Industry

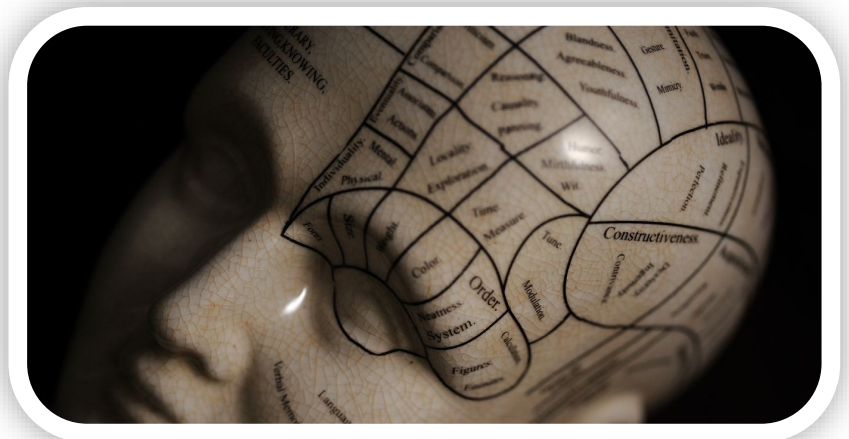
Subject Content:

- Human Lifespan and Development
- Working in Health and Social Care
- Meeting Individual Care and Support Needs
- Sociological Perspectives
- Promoting Public Health
- Nutrition
- Enquiries into Current Research into Health and Social Care
- Principles of Safe Practice in Health and Social Care



- Criminology is an academic discipline which studies crime - why it happens, how we become aware of it and how it is dealt with by society
- It is an interesting subject that has obvious links to the working of the Criminal Justice system including the police, law and prison services
- It encourages students to develop their analytical and evaluative skills whilst also encouraging them to apply what they have learnt to the real world

- Changing Awareness of Crime
- Criminological Theories
- Crime Scene to Courtroom
- Crime and Punishment



Why choose Applied Science?

- Applied Science offers you the chance to find out about the applications of a range of different science subjects, not just the traditional Chemistry, Biology and Physics.
- You want to study a work related qualification
- You will have the opportunity to gain general scientific knowledge, understanding and skills that are relevant to the world today
- Along with developing your scientific knowledge, you will be able to develop your practical skills, both providing skills necessary for further scientific study
- Studying Applied Science will give you access to a range of careers:
Pharmacy Technician
Dental Technician
Health related professions

Subject Content:

- Principles and Applications in Science
- Practical Scientific Procedures and Techniques
- Science Investigation Skills
- Optional unit



Biology

Qualification: A Level

Why choose Biology?

- You may like studying how living bodies work
- You will need a strong aptitude in Maths
- It will give you the skills to make connections with all living things around you
- You will learn to improve your communication and analytical skills
- Studying Biology will give you access to a range of exciting careers:
 - Medicine
 - Nature Conservation
 - Research Scientist
 - Marine Biologist
 - Pharmacologist

Subject Content:

- Biological molecules
- Cells
- Organisms exchange substances with their environment
- Genetic information, variation and relationships
- Energy transfers in and between organisms
- Organisms respond to changes in their external environments
- Genetics, populations, evolution and ecosystems
- The control of gene expression

Minimum Entry Requirements:

- Grades 6,5 GCSE Combined Science plus Grade 5 GCSE Maths

Or

- Grade 6 in GCSE Biology and Grade 5 in Chemistry or Physics with Grade 5 in GCSE Maths



Alleyne's
ACADEMY
NISI DOMINUS FRUSTRA - 1558

Chemistry

Qualification: A Level

Why choose Chemistry?

- Chemistry attempts to answer the big question 'what is the world made of?'
- You will need a strong aptitude in Maths
- It will give you the skills to make connections with all living things around you
- You will learn to improve your communication and analytical skills
- Studying Chemistry will give you access to a range of exciting careers:

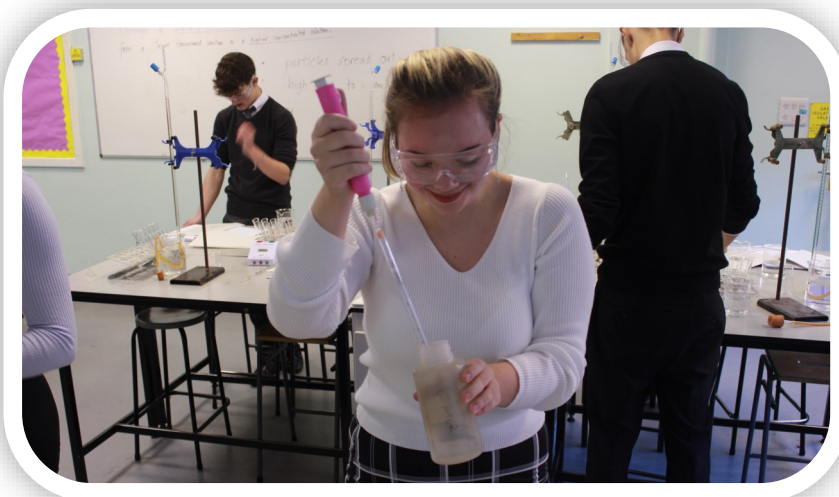
Medicine
Analytical chemist
Chemical engineer
Patent attorney
Toxicologist

Minimum Entry Requirements:

- Grades 6,5 GCSE Combined Science plus Grade 5 GCSE Maths
- Or
- Grade 6 in GCSE Chemistry and Grade 5 in Biology or Physics with Grade 5 in GCSE Maths

Subject Content:

- **Physical chemistry** including: Atomic structure, Amount of substance Bonding, Energetics, Kinetics, Chemical equilibria, Le Chatelier's principle and K_c , Oxidation, reduction and redox equations, Thermodynamics, Rate equations, Equilibrium constant K_p for homogeneous systems, Electrode potentials and electrochemical cells, Acids and bases
- **Inorganic chemistry** including: Periodicity, Group 2, the alkaline earth metals, Group 7, the halogens, Properties of Period 3 elements and their oxides, Transition metals, Reactions of ions in aqueous solution
- **Organic chemistry** including: Introduction to organic chemistry, Alkanes, Halogenoalkanes, Alkenes, Alcohols, Organic analysis, Optical isomerism, Aldehydes and ketones, Carboxylic acids and derivatives, Aromatic chemistry, Amines, Polymers, Amino acids, proteins and DNA, Organic synthesis, Nuclear magnetic resonance spectroscopy, Chromatography



Physics

Qualification: A Level

Why choose Physics?

- Physicists explore the fundamental nature of almost everything we know of
- You will need a strong aptitude in Maths; you will use this to probe the furthest reaches of the earth to study the smallest pieces of matter
- You will develop practical skills and gain the confidence needed to investigate the way things behave and work
- Studying Physics will give you access to a range of amazing careers:
Research scientist
Engineer
Medicine
Meteorologist

Subject Content:

- Measurements and their errors
- Particles and radiation
- Waves
- Mechanics and materials
- Electricity
- Further mechanics and thermal physics
- Fields and their consequences
- Nuclear physics
- Astrophysics

Minimum Entry Requirements:

- Grades 6,5 GCSE Combined Science plus Grade 6 GCSE Maths

Or

- Grade 6 in GCSE Physics and Grade 5 in Biology or Chemistry with Grade 6 in GCSE Maths



Alleyne's
ACADEMY
NISI DOMINUS FRUSTRA - 1558

Mathematics

Qualification: A Level

Why choose Mathematics?

- Maths compliments any combination of A Level courses, providing numeracy and problem solving skills
- It encourages logical thinking and working processes which can be applied to all subjects
- It is a requirement of many university courses such as medicine, physics and engineering and would prove very useful for many others such as chemistry, finance, management and design

***Further Maths could be available subject to student demand and capability.**

Subject Content:

- **Pure 1** – Quadratic functions, equations, inequalities, sketching curves, co-ordinate geometry, sequences & series, differentiation and integration, Sine and Cosine Rule, Exponentials & logarithms, co-ordinate geometry of circles, binomial expansion, radian measure & its application, geometric sequences & series, graphs of trigonometric functions, trigonometric identities & equations, differentiation and integration
- **Statistics** – summarising data, probability, correlation, regression, discrete random variables, normal distribution
- **Pure 2** - functions, numerical methods, further trigonometry, further differentiation, partial fractions, further co-ordinate geometry, binomial expansion, differentiation, integration, vectors
- **Mechanics** – kinematics of particles, statics of particles, Newton's Laws. Moments, vectors, momentum



Minimum Entry Requirements:

- Grade 6 GCSE Maths

Contacts

If you have any questions, please make contact with the most appropriate person from the following list:

Head of Sixth Form:

Mr R Haydon (r.haydon@alleynes.staffs.sch.uk)

Mrs R Rutter (r.rutter@alleynes.staffs.sch.uk)

Deputy Headteacher:

Mr T Tweats (t.tweats@alleynes.staffs.sch.uk)

Senior Assistant Headteacher Responsible for Curriculum:

Mr S Eldershaw (s.eldershaw@alleynes.staffs.sch.uk)

Queries about Careers:

Mrs Giselle Douglas (Careers and Participation Service) (g.douglas@alleynes.staffs.sch.uk)

Queries about individual subjects:

Art and Design, Drama,
Biology, Chemistry, Physics,
Science Applied General

Business (Both Courses)

IT Applied General

Computer Science

English Language

English Literature

French

Geography

History

Maths/Further Maths

Sport

Religious Education,

Psychology, Sociology,

Applied General: Psychology,

Criminology &

Health and Social Care

Mr S Butler

Miss C Dawson

Miss C Newnes

Mrs H Spooner

Miss D Hunt

Miss D Hunt

Mrs V Durand

Mrs M Rushton-Fox

Mrs J Davies

Mr C. Whalley

Mr K. Blake

Mrs R Umerah

Miss C Parrish

s.butler@alleynes.staffs.sch.uk

c.dawson@alleynes.staffs.sch.uk

c.newnes@alleynes.staffs.sch.uk

h.spooner@alleynes.staffs.sch.uk

d.hunt@alleynes.staffs.sch.uk

d.hunt@alleynes.staffs.sch.uk

v.durand@alleynes.staffs.sch.uk

m.rushton-fox@alleynes.staffs.sch.uk

j.davies@alleynes.staffs.sch.uk

c.whalley@alleynes.staffs.sch.uk

k.blake@alleynes.staffs.sch.uk

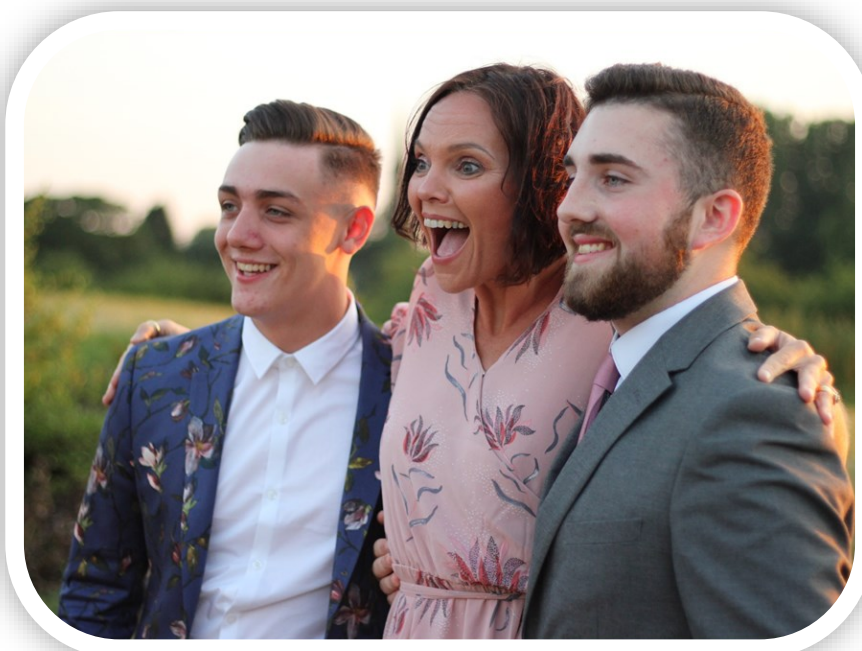
r.umerah@alleynes.staffs.sch.uk

c.parrish@alleynes.staffs.sch.uk



Supporting you through the Application Process

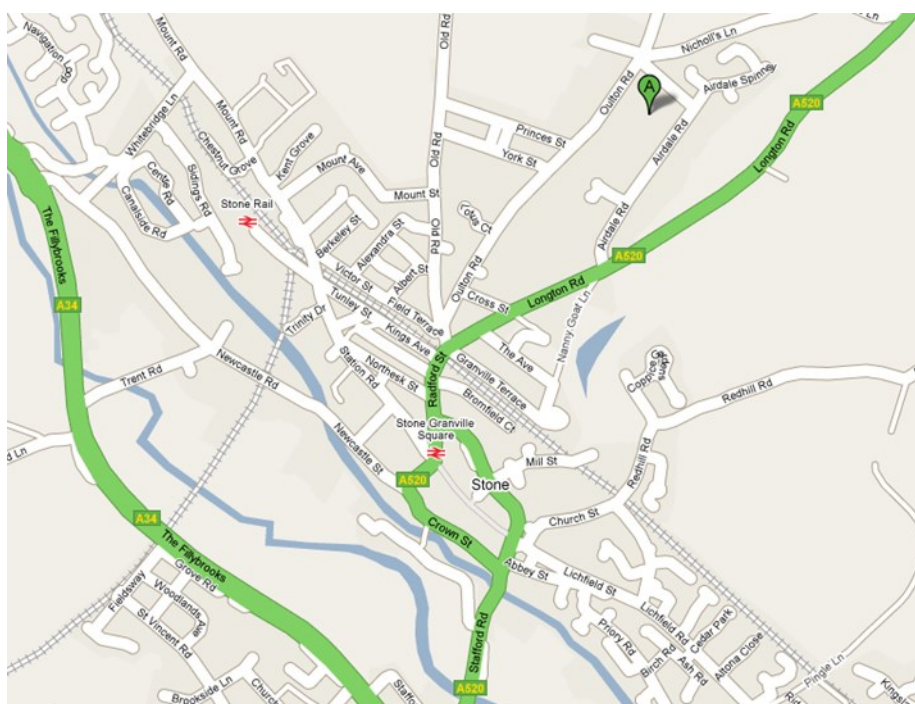
Autumn 1 (Thursday 19 October 5.30-7.30pm)	Sixth Form Open Evening with a presentation from the Headteacher, Head of Sixth Form and the Student Head Team followed by subject talks.
Autumn 2 (November until Christmas Break)	Thinking about your Future – Subject Choices – an opportunity to talk to students taking the subjects and subject teachers Taster Sessions (w/c 1112/23) – Y11 students can experience a taster session in up to 4/5 different subjects to help inform their application choices
Spring 1 (January to February Half Term)	Application Workshops to meet deadline for applications of 31 st January. Work in tutor groups with the Head of Sixth to complete their online applications. Specialist advice available if required.
Spring 2 (Late February to Easter)	Sixth Form Interviews – All applicants and their parents/carers will have the opportunity to have a 1 to 1 interview with a member of SLT to discuss their application and future plans.
Summer 1 (Following Easter up to May Half Term)	GCSE exams – Y11 will be starting their GCSE examinations during this half term.
Summer 2 (June through to end of Summer term (mid/late July))	Following GCSE exams all applications will have their Induction for Sixth Form day where they will have a lesson and have Bridging Work set for completion over the summer for submission at the start of term in September 2024.





Headteacher: Ms K Lockett, BA Hons, MEd, NPQH

Alleyne's Academy
 Oulton Road, Stone, Staffs, ST15 8DT
 Telephone: 01785 337400
office@alleynes.staffs.sch.uk
www.alleynesacademy.co.uk



A company limited by guarantee. Registered in England. Number 8611863

